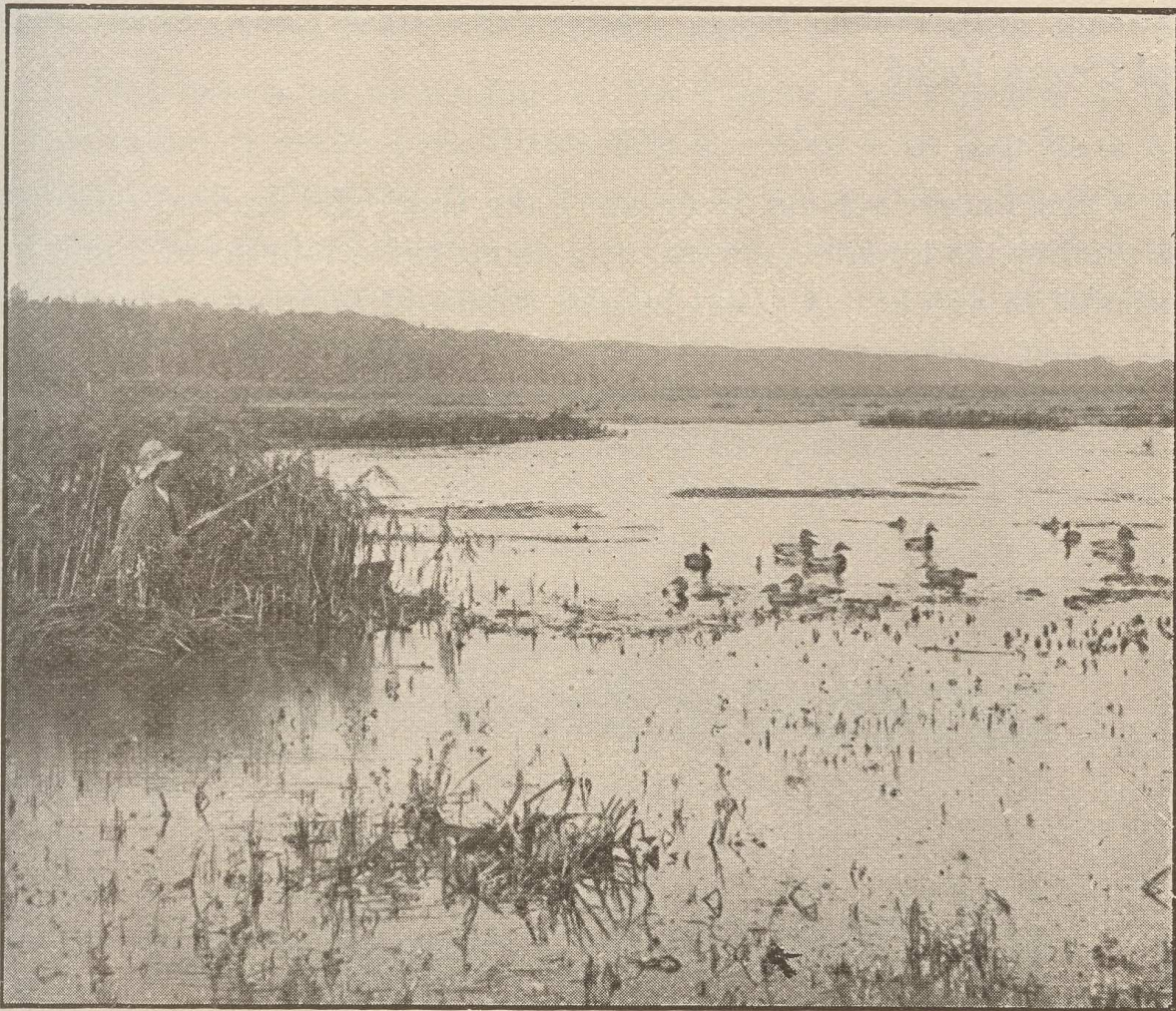


Indiana Commissioner's Report of Fisheries and Game 1907-1908

CROOKED LAKE

About three-fourths of a mile southwest of Lake James Park we come to the main or east basin of Crooked Lake, which is about four miles long, including a narrow channel or gorge of two miles in length. This lake is shaped somewhat like a gourd, the main basin at the east representing the bowl and the narrow channel representing the handle.



Its Shores, However, Are Marshy.

Crooked Lake is a beautiful body of water with considerable sandy, gravelly shore, with fine shade and clean beach and shallow bathing grounds extending well into the lake. The “gourd handle” extension has high banks in places. Its general outline is that of a gorge or deep valley. Its waters contain a vast amount of aqueous vegetation, among which the festive “mud turtle” is at home. Crooked Lake discharges its waters at the northwest end of the gourd-handle extension, through a turbulent little stream, known as Concord Creek, into Lake Gage.

Crooked Lake may be reached by the St. Joseph Valley Railroad – known as the Valley Line— either from LaGrange on the west, or Angola on the east. It taps the lake at Pleasant Hill, where are located a number of cottages and a popular hotel, the “Oak Bluff,” Peter Richardson, proprietor. The platted villages on this lake are, Pleasant Hill, Pebble Beach, Cedar Side, Rose Lawn, Shady Side and Crown Point.